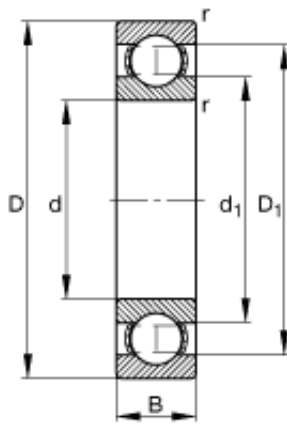




Bearing Import and Export Co., Ltd.



530 mm x 650 mm x 56 mm FAG 618/530-M Deep groove ball bearings

Bearing No. 618/530-M

618/530-M Bearing 2D drawings and 3D CAD models

Size	530x650x56 mm
Bore Diameter	530 mm
Outer Diameter	650 mm
Width	56 mm
d	530 mm
D	650 mm
B	56 mm
D_1	610,8 mm
$D_{a \max}$	637,6 mm
d_1	570,4 mm
$d_{a \min}$	542,4 mm
$r_{a \max}$	2,5 mm
r_{\min}	3 mm
m	41,3 kg / Weight
C_r	305000 N / Dynamic load rating (radial)
C_{0r}	550000 N / Static load rating (radial)
n_G	1620 1/min / Limiting speed
n_B	980 1/min / Reference speed
C_{ur}	12800 N / Fatigue limit load, radial