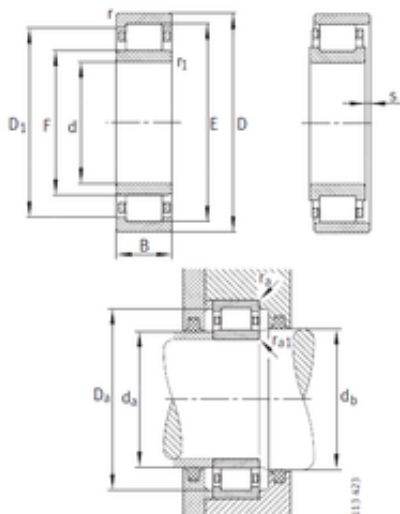




Bearing Import and Export Co., Ltd.



380 mm x 680 mm x 175 mm FAG NU2276-E-M1 Cylindrical roller bearings with cage

Bearing No. NU2276-E-M1

Bore Diameter	380 mm
Outer Diameter	680 mm
d	380 mm
F	451 mm
D	680 mm
E	615 mm
B	175 mm
C	175 mm
ra1 max.	5 mm
r min.	6 mm
r1 min.	6 mm
D1	588,8 mm
da min.	406 mm
da max	446 mm
Da max.	654 mm
db min	456 mm
ra max.	5 mm
S	13,8 mm
Weight	288 Kg
Basic dynamic load rating (C)	4050 kN
Basic static load rating (C0)	6700 kN
Fatigue load limit (Pu)	610
Reference speed	455 r/min

NU2276-E-M1 Bearing 2D drawings and 3D CAD models